



# **SWINDON TOWN**

**football club**



**official  
programme 6d**

# furniture & furnishings

of charm and distinction . . .  
carpets floor coverings loose  
covers curtains skilled workshop  
repair service . . .

furnishing contractors  
to:  
government departments  
hospitals hotels  
schools factories  
offices . . .

Our fully trained and  
experienced staff  
can deal promptly  
and efficiently  
with any furnishing  
problem



# mills+merricks

established over 65 years

# ltd

16/17 Bridge Street Swindon phone 5365/6

# SWINDON TOWN FOOTBALL COMPANY LIMITED

Registered Office: COUNTY GROUND, SWINDON

## Directors:

Mr. W. J. CASTLE (Chairman)                      Mr. H. E. LANE (Vice-Chairman)  
Messrs. F. L. COLLINGS, A. W. DONE, M. EARLE, R. FRICKER, C. J. GREEN,  
F. PLYER, H. WILLIAMS and K. H. WILMER.

Manager: D. WILLIAMS.

Secretary: R. MORSE.

---

VOL. 18

SATURDAY, 27th JANUARY, 1968

No. 17

---

SATURDAY, 27th JANUARY, 1968

F.A. CUP THIRD ROUND

**SWINDON TOWN**

**v.**

**BLACKBURN ROVERS**

Kick-off 3 p.m.

---

REFEREE:

MR. D. J. LYDEN (Birmingham)

LINESMEN:

Red Flag—MR. G. TROUT (Redditch)

Yellow Flag—MR. P. T. JOHNSON (Catford)

# ***The Borough Stationers***

**6 Commercial Road Swindon**

For all office stationery

Backed by the resources of the

Borough Press

The most comprehensive stock in the District

---

Meet your friends for an enjoyable evening at

## **THE KINGSDOWN ARMS**

(Host A. W. Vann)

FULLY LICENSED - ARKELL'S BEERS

SNACKS - Etc.

**STRATTON ST. MARGARET**

**Tel. 3283**

---

## **WILSONS (SWINDON) LTD.**

**BUILDERS OF MODERN ATTRACTIVE  
HOUSES AND BUNGALOWS**

Developments at:

Upper & Lower Stratton — Blunsdon & Highworth

**HEAD OFFICE:**

**90/91 COMMERCIAL ROAD - SWINDON**

**Telephone Swindon 6361/3**

# NEWS and VIEWS

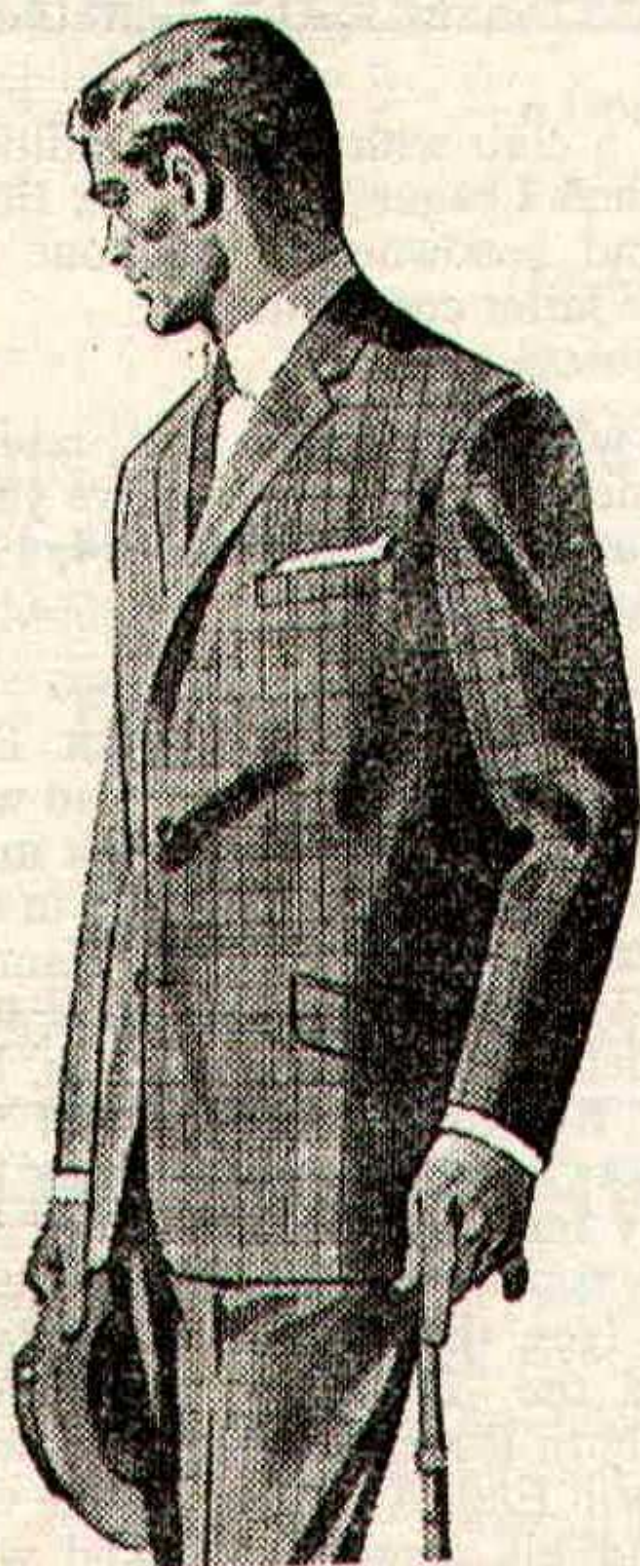
This afternoon we entertain a club with a great tradition. Founder members of the Football League in 1888. Six times winners of the F.A. Cup, and renowned throughout the country for their prowess in the latter competition.

Proud Blackburn Rovers, what memories that revives among our older supporters—men upwards of sixty-five years of age! How that name rang out in the cupties of 1914, 1919 and 1939.

What famous names can be recalled? The great Bob Crompton, the prince of right full backs, a one club man who served Blackburn from 1896-1920. That little ball of a man, but what an inside right, Danny Shea. I saw him play in the early 1920's, and yet, he was transferred from West Ham in 1912. Another transfer from West Ham, in 1924, was that great centre forward, Syd Puddefoot. So we could go on, but not only players have served Blackburn well, four of the present Board of Directors, between them, have given 119 years of real hard work. Many famous men have filled the office of manager, Mr. J. Carey (now at Nottingham Forest), Jackie Bestall, Bob Crompton (yes, the same one), England full back Eddie Hapgood and the "Boss" at present, Mr. Eddie Quigley, himself a Blackburn Rover, having been transferred in 1951 from Preston North End. At one period he was assistant manager at Bury, and his name was linked with Swindon Town.

We last played Blackburn in the Second Round of the F.A.

**Come Co-operative Shopping**



FOR  
THE BEST  
IN  
MEN'S  
WEAR

**SWINDON AND DISTRICT CO-OPERATIVE SOCIETY  
6 FLEET STREET, SWINDON**

## NEWS AND VIEWS—continued

Cup in season 1921-22. I well remember the competition, Swindon defeated Leeds United 2-1 in the First Round. It was in this game that Harold Fleming scored a wonderful goal at the Stratton Bank end. It was a left foot shot, from the inside right position, from an incredible angle. The ball went in the net just by the far post.

The next game was very evenly contested and, with five minutes left for play, everything pointed to a draw. Then came the vital penalty. As David Rollo, captain and right back, began to walk forward to take the kick, he was congratulated (we presume in anticipation) by left back Tommy Wylie. A few seasons later, Tommy became a Swindon player and what a character, he certainly enjoyed life. He was a very short man, but a very tenacious player. Wally Dickenson captain of Swindon at the time, wrote this of him in an article he contributed to a Handbook:

“Tommy Wylie, my partner at full back, was a very strong defender. Everyone recalls his wonderful game against Newcastle. That game was the First Round in season 1928-29, and Swindon won 2-0 at Newcastle, drew 3-3 at Burnley and won the replay 3-2. Then followed a 0-0 draw with Arsenal (at the height of its fame), at home, and a defeat 0-1 at Highbury. Most of us remember Wylie much better during season 1927-28, and his great game at Crystal Palace.” Around this time we enjoyed much success in the “Cup”, as in season 1929-30 when we won 2-0 at Manchester United (just imagine that happening today).

However, to our match today. A couple of seasons ago Blackburn were relegated from Division I, at present they

Tel: Swindon 5884

## **W. J. SELWOOD**

### *Saddlery*

General Leather Goods Manufactured  
and Repaired to Your Individual  
Requirements

103 BROAD STREET  
SWINDON WILTS

Always at your service

## **L. BIBBY**

For all Types—Rags, Iron and Metal,  
etc. Spot Cash Paid. Please Tel. 2101  
and our van will call.

THE PADDOCK, ERMIN STREET  
STRATTON ST. MARGARET

## ★ Cedarwood Sheds ★

## ★ Workshops and Greenhouses ★

Made locally by

# **H. R. SPACKMAN**

**SHRIVENHAM ROAD - SWINDON - WILTS**

Telephone Swindon 4458

## **WISES CATERING SERVICE**

(Reg. Wise)

Our Caterer for the past 19 seasons  
Guarantees

**A GOOD CUP OF TEA AT THE  
COUNTY GROUND**

A full range of Sweets & Cigarettes  
at any of our five kiosks on your  
way in. **ENJOY YOURSELF**

## **Warnes Rentals**

*To be sure!*

51 Commercial Road,  
**SWINDON**

Tel: 6486



## NEWS AND VIEWS—continued

occupy a high position in Division II, and the match will be closely contested. I wonder if history will repeat itself. The Rovers still play in their blue and white halves—it is good to see the old style still maintained. It is sad that two real stalwarts will be missing, namely Ronnie Clayton and Brian Douglas. Both have served Blackburn and England for many years.

The Cup brings tremendous interest and enthusiasm, yet to both clubs engaged today, position in the League is so important. Swindon, at present, are in fourth position, with their sights firmly on promotion. Blackburn also entertain good prospects of promotion.

As the manager so rightly insists, the Second Division of the League is the toughest of all. In a few weeks time Division Two will be lined up in two sections—the top half striving for the two places which will get them out of the division, and the rest battling to miss the dreaded two places which also gets them out of the division, but the wrong way.

We were pleased to read of the appointment of Mr. W. Harvey as manager of Grimsby Town. "Bill" spent a few months at Swindon in 1965 as coach. Although his stay was not very long, he enjoyed respect and popularity from the players. A genuine sincere man who has not achieved the success he deserves. We wish him the best of luck and feel he will do well with his home club, one of the most liked in the League and renowned for its hospitality.

Finally, we are sure we shall witness a splendid game this afternoon. May it be played throughout in the right spirit, and the better team win.

## ***Swindon Sports Centre***

**FOR ALL YOUR SPORTS EQUIPMENT & SPORTS CLOTHING**

Largest range of Football Boots, Adidas, Mitre, Lawrence,  
Winit, Pocock etc.

Supporters Club Scarves, Rattles etc. Send for Winter Catalogue.

**23 COMMERCIAL ROAD, SWINDON**

**Telephone: 4270**

Suppliers to Swindon Town A.F.C.

### **Maylott Studios**

**For GROUP & SPORT Photographs**

Official Photographer to  
Swindon Town Football Club

**31 FARINGDON ROAD**  
TEL. 22792

### **Notton's Cafe**

**COUNTY ROAD**

200 yards from Ground

**PERFECT MEALS AT ALL TIMES**

### **L. Wollen**

**OFF LICENCE**

**WINES and SPIRITS**

**Arkell's Ales and Stout**

**373 Cricklade Road, Swindon**  
Deliveries Daily Phone 3508

### **C. DUNN & SON**

**Builders & Decorators**

Alterations, Renovations,  
Conversions, Plumbers &  
Sanitary Engineers

**503 CRICKLADE RD. Tel. 22522**

## **W. COLLINS (Swindon) LTD.**

**TURF ACCOUNTANTS**

**69 COMMERCIAL ROAD - SWINDON**

**TEL. 21371**

**AND AT THE GREEN, LYNEHAM**

# **FORTHCOMING MATCHES**

**SATURDAY, 3rd FEBRUARY, 1968**

**DIVISION III**

**WALSALL**

**Kick-off 3 p.m.**

---

**SATURDAY, 10th FEBRUARY, 1968**

**FOOTBALL COMBINATION**

**BIRMINGHAM CITY**

**Kick-off 3 p.m.**

---

**SATURDAY, 17th FEBRUARY, 1968**

**DIVISION III**

**GRIMSBY TOWN**

**Kick-off 3 p.m.**



# W. J. CASTLE

Office and Bakery:

4 and 5 MARKET STREET  
SWINDON

Telephone 22017

## Specialists

BIRTHDAY CAKES - WEDDING CAKES

DAIRY CREAM - PASTRIES

BUNS - ROLLS - SPONGES

Do not let **CHILBLAINS** spoil a good game



## RELAPERN

Price 2/6 from your CHEMIST

2/10 Post Paid from

**BALLARD & CO. (CHEMISTS) LTD.**

**FARINGDON - BERKS**

# OUR VISITORS



## BLACKBURN ROVERS FOOTBALL CLUB

### **ADAM BLACKLAW (Goal)**

Born Aberdeen. A close-season capture from Burnley. Scottish International who made more than 350 League and Cup appearances with Burnley. Big, powerful and very consistent.

### **JOHN BARTON (Goal)**

Born Wigan. Was signed by the Rovers from Preston North End, for whom he made his First Division debut against Arsenal at Highbury at the age of 16. Joined Preston straight from School.

### **KEITH NEWTON (Right back)**

England International who was on the short list for the World Cup. A native of Manchester, he joined the Rovers as a Junior and was in the team which won the F.A. Youth Cup in 1959.

### **BILLY WILSON (Left back)**

Born at Seaton Delaval. A product of Northumberland Junior football, he signed for the Rovers in September, 1963, following a trial period and has progressed through the Junior sides.

### **RONNIE CLAYTON (Half back)**

The Club captain, who is now in his 18th season. A native of Preston, he joined the Rovers straight from school and has now made more than 600 League and Cup appearances. A former England International and Captain.

### **JOHN CODDINGTON (Centre half)**

Another close season buy. Formerly with Huddersfield Town for whom he was first-choice centre-half for many seasons. Big and strong. A native of Worksop, he joined Huddersfield straight from school.

**"A FAMOUS NAME IN ROSES"**

# **GREGORY'S ROSES**

**STAPLEFORD NOTTINGHAM**

An agent for Rose Trees grown by Gregory's of Nottingham.

All bushes are guaranteed and will be replaced if fail to bloom.

Discount on quantities over £2.

For catalogues and details apply:-

**K. M. CLARKE, THE WHITE HOUSE, EASTROP,  
HIGHWORTH, WILTS.**

Telephone: Highworth 322

---

**G. H. FLOWER & SON LIMITED  
WOOD LANE, CHIPPENHAM**

LICENCE No. S.2802

PHONE 2017

## **SCRAP METAL**

and

**GENERAL WASTE SALVAGE DEALERS**

Plant dismantling carried out

Members of

**National Association of Non-Ferrous Metal Merchants**

---

## **THE PORK SHOP**

(Swindon Bacon Curing Co. Ltd.)

Specialists in

**BACON - PORK - COOKED HAM**

**50 FLEET STREET - SWINDON**

**TEL: 22122**

## **OUR VISITORS—continued**

### **MIKE FERGUSON (Outside right)**

A native of Burnley, joined the Rovers in March, 1962 on the break-up of Accrington Stanley. Has made more than 200 League and Cup appearances for the Rovers, chiefly as a skilful and hard-working inside forward or winger, though he has played very successfully at back and wing half.

### **BRYAN DOUGLAS (Inside forward)**

A native of Blackburn, who joined the Rovers as a junior and soon won acclaim as one of the most skilful footballers since the war. Now in his 15th season with the club, he has won more than 30 England caps as a winger and inside forward.

### **WALTER JOYCE (Inside forward or wing half)**

A native of Oldham, he played for Lancashire schoolboys. Signed by Burnley and was transferred to the Rovers in February, 1964. He has proved a most valuable utility player, appearing at back, wing half and as a "link" forward.

### **BEN ANDERSON (Centre forward)**

A big, strong player who joined the Rovers from Peterlee, the Durham junior Club. Born Berdeen. Has played at wing half, centre half and in attack. A very dangerous player when the ball is in the air.

### **ALLAN GILLIVER (Centre forward)**

Was signed from Huddersfield Town in June, 1966, and had an unlucky first season. He played in only a few games before breaking down with a back injury which needed a serious operation. Fully fit again.

### **JOHN CONNELLY (Outside left)**

Born at St. Helens, he was formerly with Burnley and Manchester United, from whom he joined the Rovers in September, 1966. Capped a number of times by England and a member of the World Cup party last year. One of the leading wingers of the decade.

# BRETTS

PET AND GARDEN SUPPLIES

32-33 Commercial Rd.  
Swindon

6 Cromwell St.  
Swindon

## Electric Shaver Specialists

- Repairs, spares, 8 hour servicing for all makes.
- Full range of new shavers. Reconditioned shavers.
- Part exchanges. Agents for "Executive" shavers.

### BARBER SHOP

117 MANCHESTER ROAD, SWINDON

Telephone: 3131

FOR ALL YOUR ANGLING NEEDS  
CONSULT

### FRANK WOODWARD

Swindon's Fishing Tackle Specialist

25 HAVELOCK ST., SWINDON  
PHONE 3879

For Paints of Good Quality

### H. S. HODGES & SONS (SWINDON) LTD.

CRICKLADE RD., SWINDON  
PHONE 22422

Dulux, Brolac, Valspar, Wallcharm,  
etc.

### SOUTHERN LAUNDRY CO. LTD.

Launderers and Dry Cleaners

HAYDON ST. - SWINDON  
TELEPHONE 4161

The Advertisers in this  
programme have supported  
the Club. Will you help us  
reciprocate by supporting  
them whenever possible?



## **OUR VISITORS—continued**

### **DAVID HELLIWELL (Forward)**

Local born player who joined the Club straight from school and who has progressed through the Junior teams. A good ball player who made his League debut against Huddersfield Town at Huddersfield on the 3rd September, 1966.

### **EAMON ROGERS (Wing half or Inside forward)**

Joined the Club as an apprentice on the 25th May, 1962, signing full time pro. on the 28th April, 1965. Born Dublin and is an Irish under-23 International player. A strong player.

### **DICK MULVANEY (Centre half)**

A burly six-footer from Peterlee, Co. Durham, who signed for the Rovers in February, 1964 and who had his first baptism in League Football against Leicester City at Ewood Park on the 26th September, 1964. A strong defensive type of player who has also played in the centre forward and full back positions.

### **GEORGE SHARPLES (Wing half)**

Signed from Everton in March, 1965, born Ellesmere Port. A strong well built player who has a pronounced attacking flair and is a brilliant distributor of the ball.

### **BARRIE HOLE (Half back)**

One of the most skilful attacking wing halves in the game, Hole joined the Rovers from Cardiff City at a big fee on 4th July, 1966. A native of Swansea, he has been capped many times by Wales and is now a fixture in their international side.

### **MALCOLM DARLING (Forward)**

Born Arbroath. Signed from Luncarty Junior F.C. on the 27th October, 1964. Had made his progress from the Junior teams. Made his League debut, when he also scored, against Newcastle United at Ewood Park on the 13th November, 1965.

## Hatton's Newsagency

A. J. D. & N. J. Woodhouse

**Newsagents :: Tobacconists  
Confectioners**

Agents for Wessex School of  
Motoring

Booking Agents for Rimes Coaches

**6 Regent Circus (near G.P.O.)**

**Telephone Swindon 22731**

## HULFORD MOTORS Ltd.

**SELF DRIVE HIRE**

Fleet of 1968 Fords  
Anglias De-Luxe - Cortinas  
De-Luxe - Zephyr V4

**SHRIVENHAM ROAD**

(200 yards from Football Ground)

Phone 4934

Large Car Park available

For High Class  
Central Heating, Plumbing  
Painting and Decorating  
Electrical Installations  
and Repairs

**NORTH WILTS  
Sanitary & Heating  
Co. Ltd.**

**NEWPORT ST., SWINDON**

Phone 5373/4

**your savings  
are safe and  
sound in ...**

MEMBER OF THE BUILDING  
SOCIETIES ASSOCIATION

# BRISTOL BUILDING

Swindon  
BRISTOL & WEST HOUSE

**SWINDON TOWN**

Downsborough

Thomas (2)

Trollope

Butler (4)

Nurse (5)

Heath (7)

Penman (8)

Terry (9)

**KEEP IN TOUCH  
EVENING  
ADVERTISER  
WITH THE NEWS**

Swindon's 12th Man  
Dawson

Connelly (11)

Darling (10)

Gulliver (9)

Hole (6)

Coddington (5)

Wilson (3)

Newton

Blacklaw

**BLACKBURN ROVERS**

## *Mills & Merrick*

Complete House Furnishings

Furnishing Contractors

**16-17 BRIDGE STREET, SWINDON.**

# BRISTOL & WEST BUILDING SOCIETY

Swindon Office:

BRISTOL & WEST HOUSE, REGENT CIRCUS, SWINDON

## SWINDON TOWN

Downsborough

as (2) Trollope (3)

Nurse (5)

Harland (6)

Terry (9)

Smart (10)

Rogers (11)

KEEP IN TOUCH  
EVENING  
ADVERTISER  
WITH THE NEWS

These teams are subject  
to alteration

Blackburn's 12th Man

Gulliver (9)

Rogers (8)

Ferguson (7)

Coddington (5)

Mulvaney (4)

on (3) Newton (2)

Blacklaw

BLACKBURN ROVERS

## *Merricks Ltd.*

House Furnishers and

Painting Contractors

SWINDON.

Tel: 5365/6

## McILROYS RESTAURANT

### Banqueting & Ballroom

for morning coffee,  
luncheon and  
afternoon tea - in  
pleasant surroundings -  
you will find McIlroys  
are top of the  
'league'. For all  
occasions.

Fully Licenced. Parties and  
Functions catered for.

**McIlroys Restaurant**  
64-72 Regent Street  
Tel. 5294



THE ALCOHOL FUEL

## COATE GARAGE

REPAIRS - OVERHAULS - WELDING  
SERVICING - REBORING - TYRES

Props. E. V. & W. H. Mattick  
Marlborough Rd., Swindon

## DIVISION III

(up to and including Thursday, 25th January, 1968)

	P	W	D	L	F	A	Pts
Walsall	27	13	7	7	49	36	33
Torquay United	26	13	7	6	38	33	33
Bury	27	12	7	8	58	41	31
<b>Swindon Town</b>	<b>26</b>	<b>10</b>	<b>9</b>	<b>7</b>	<b>41</b>	<b>26</b>	<b>29</b>
Oxford United	26	10	9	7	45	37	29
Shrewsbury Town	26	10	9	7	39	37	29
Stockport County	26	12	5	9	34	33	29
Peterborough United	27	12	4	11	44	43	28
Reading	26	12	4	10	39	41	28
Watford	27	11	5	11	44	29	27
Barrow	27	11	5	11	36	32	27
Brighton & H.A.	26	9	9	8	31	30	27
Bournemouth & B.A.	27	10	7	10	30	32	27
Gillingham	26	9	9	8	32	35	27
Oldham Athletic	27	12	2	13	39	39	26
Southport	26	10	5	11	41	42	25
Northampton Town	26	9	7	10	34	38	25
Tranmere Rovers	26	9	6	11	43	46	24
Bristol Rovers	25	9	6	10	35	39	24
Colchester United	26	8	8	10	33	45	24
Orient	24	7	7	10	27	34	21
Mansfield Town	26	7	6	13	32	41	20
Scunthorpe United	26	5	8	13	30	50	18
Grimsby Town	26	6	5	15	28	43	17



## throughout the West

you will find Bradley Estates beautifully situated to meet the requirements of modern living. If you are thinking about a new home and would like to receive full details of our current and planned estates write now to 74 Victoria Road Swindon Wiltshire. Please send me details of

- Green Meadow Estate, Swindon, Wiltshire
- Nythe Estate, Swindon, Wiltshire
- Monkton Park Estate, Chippenham, Wiltshire
- Park Hill Estate, Frome, Somerset
- Milldown Estate, Blandford Forum, Dorset
- Southwick Estate, Trowbridge, Wiltshire
- Estates planned for Poole, Dorset

Name .....

Address .....



# BRADLEYESTATES

---

# SUPPORTERS *CLUB NOTES*

---

Before passing to domestic affairs, I would like to extend to the team and supporters of Blackburn Rovers a hearty welcome to the County Ground from the supporters of Swindon Town. Our Social Club is located in the car park, just outside the ground, and our members would welcome any Blackburn supporters, either before or after the match. Hot meals and/or hot snacks are available to them before starting the journey back to Blackburn.

Today, we can all show our appreciation of Don Rogers, in a tangible manner, as he has chosen this as his benefit match. As is customary for all our players, the Supporters Club has organised a collection, and we look forward to a record amount. The five years he has spent with Swindon Town bears the mark of his exciting personality on the field, and there can be few supporters here today who cannot remember many occasions when he has taken a game by the scruff of the neck and shaken life into it. We all look forward to many more. Don's debut in the Football League with the 1st team was against Southend United on the 17th November, 1962. His first F.A. cup tie was played against Yeovil, away, on the 24th November, 1962. The first of many goals was scored, against Notts County on the 1st December, 1962.

Supporters Club sporting activities progress with varying success. The Supporters Club Football team, which plays in the 4th Division of the Swindon Sunday League, is lying third—four points behind the leaders with a game in hand. Incidentally, next Sunday morning, at home behind the County Ground, will see a real clash against Portazan. This Club has the unique record of only being beaten once since its formation four years ago—and this was by the Supporters Club, earlier in the season. On Sunday, the Supporters will be flat

Suppliers to the Swindon Team

**MAY WE SUPPLY YOU?**



**EARLE**

**of Chippenham Limited**

MAIN

**FORD**

DEALERS

**COCKLEBURY ROAD - CHIPPENHAM**

**Telephone 3255**

## SUPPORTERS' CLUB NOTES—continued

out for the double, and Portazan flat out for revenge. Why not come and see it?

The Supporters Social Club team, in their first season in Division 6, are finding the going difficult, and are next to bottom. Nevertheless, the players all enjoy the Sunday morning game, and the lunch time post mortem — sometimes including the opponents—make a lively session. Supporters Club and their opponents also fortify their tissues in the Social Club.

Tonight's **Party Night** at the **Club** sees a return visit by **The Sunsets**. After tomorrow's **Bingo**, music will be by the **Johnny McCarthey Trio**.

Next month—**February**—sees the following entertainment: **Saturday Party Nights**.

Saturday, February 3rd—**Ken Kitching**, always popular. Saturday, February 10th—**The Merve Gilbert Quartette**. Saturday, February 17th—**The Brian Hamley Quartette**. Saturday, February 24th—**The Sunsets**.

Every Friday, **Bingo**, followed by **The Johnny McCarthey Trio**. Every Sunday, **Bingo**, with music after by these groups:

Sunday, February 4th—**The Master Sounds**. Sunday, February 11th—**The Swinging Shepherds**. Sunday, February 18th—**The Johnny McCarthey Trio**. Sunday, February 25th—**The Pete Lowe Trio**.

For other activities, watch the Club Notice Board.

**SPECIAL NOTE.**—All **HOME** all ticket matches. Only members enrolled before December 2nd, 1967 are eligible for tickets through the **Supporters Club**. Anyone joining now is advised of this when joining, and membership cards are dated, or otherwise noted. Accordingly, tickets will not, repeat not, be made available to members enrolled since December 3rd last.



... not just concrete, but

# Premix

SWINDON AREA OFFICE c/o COLN GRAVEL CO. LTD  
CLAYDON PIKE LECHLADE GLOS.

PHONE LECHLADE 461/2

Premix—an Amey company—serves 21 counties



## CLARK BROS. (Swindon) Ltd.

Building and Civil Engineering Contractors

CONSULT US FOR  
BUILDING AND CIVIL ENGINEERING  
CONSTRUCTION IN ALL ITS PHASES

**STRATTON ROAD**  
**SWINDON**

Telephone  
Swindon 27261

International Football League Match

**The Football League v. The Scottish League**

at Ayresome Park, Middlesbrough

on Wednesday, 20th March, 1968

Kick-off 7.30 p.m.

.....  
Tickets in advance for this match will be available  
from

“The Secretary”,  
Middlesbrough Football Club,  
Ayresome Park,  
Middlesbrough, Yorks.

as follows:—

Reserved seats

Centre Stands 12/6

Wing Stands 10/-

Terrace Seats 8/6

East End Seats 7/6

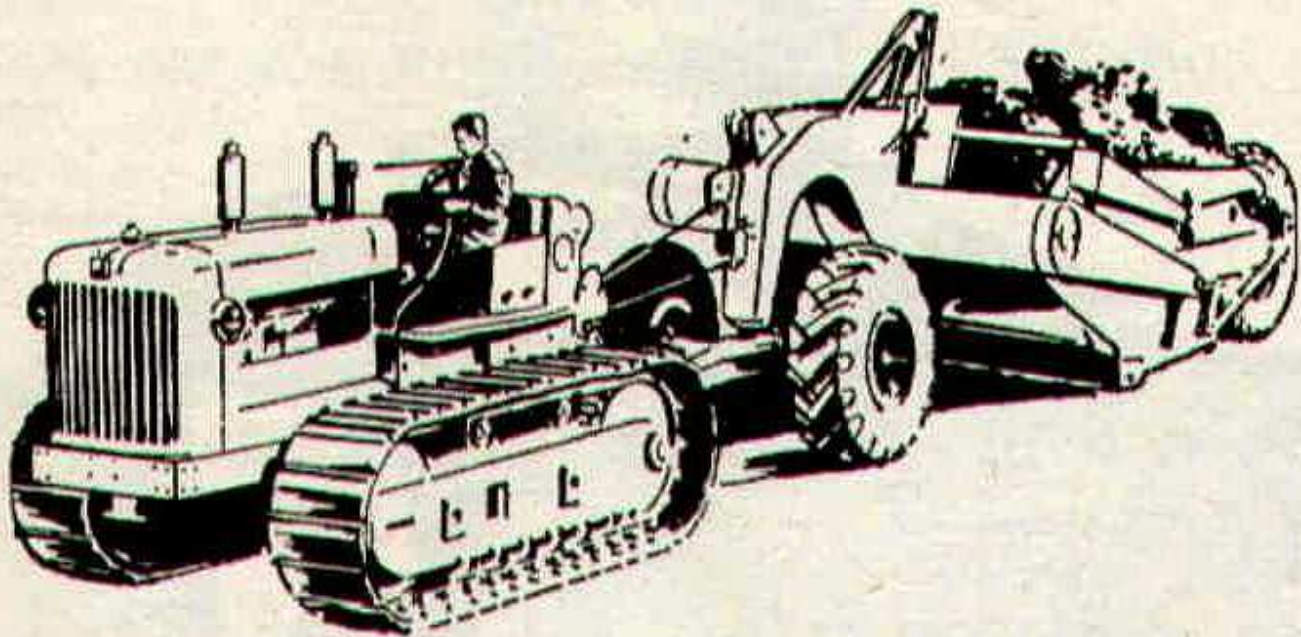
Applications for tickets should be accompanied by  
remittance and stamped addressed envelope for  
return of tickets.

Admission to South Paddock 5/-; Ground 4/6  
(Boys 2/-); will be by cash at the turnstiles.

**H. HIBBERD LTD.**

**40 NEWPORT STREET, SWINDON**

***Plant Hire Contractors***



**FOR YOUR EARTH-MOVING EQUIPMENT**

**TELEPHONE SWINDON 6125**



**DON ROGERS**

# Cecil Green

Artistic Decorations in all its branches

12 Armstrong Street, Swindon, Wilts. Tel. 4593

---

## G. A. STREETLY

Tobacconist and Confectioner

10 BOURNE ROAD - MOREDON - SWINDON

Telephone: 4956

"COAL!"  
"COAL!"  
"COAL!"

---

## J. WILMER

St. Margaret's Road  
Swindon

TELEPHONE 22535

---

## LEESE, ING & CO. LTD.

Mineral Water and Squash Manufacturers

LANSDOWN ROAD - SWINDON

TELEPHONE 22744

# KEY OF THE BOARD

## First Section

- A—Aston Villa v. Millwall
- B—Barrow v. Leicester
- C—Blackpool v. Chesterfield
- D—Bournemouth v. Liverpool
- E—Bristol City v. Bristol Rovers
- F—Burnley v. West Ham
- G—Chelsea v. Ipswich
- H—Colchester v. West Bromwich Albion
- I—Coventry v. Charlton
- J—Doncaster v. Swansea
- K—Fulham v. Macclesfield
- L—Halifax v. Birmingham
- M—Leeds v. Derby
- N—Manchester City v. Reading
- O—Manchester United v. Tottenham Hotspur
- P—Middlesbrough v. Hull
- Q—Newcastle v. Carlisle
- R—Norwich v. Sunderland
- S—Nottingham Forest v. Bolton
- T—Orient v. Bury

## Second Section

- A—Peterborough v. Portsmouth
- B—Queen's Park Rangers v. Preston
- C—Rotherham v. Wolverhampton Wanderers
- D—Sheffield Wednesday v. Plymouth
- E—Shrewsbury v. Arsenal
- F—Southampton v. Newport
- G—Southport v. Everton
- H—Stoke v. Cardiff
- I—Tranmere v. Huddersfield
- J—Walsall v. Crystal Palace
- K—Watford v. Sheffield United
- L—Brighton v. Oxford United
- M—Aldershot v. Hartlepool
- N—Barnsley v. Exeter
- O—Bradford v. Crewe
- P—Brentford v. Bradford City



**British Rail**

## **We can organise your Group Travel—very well too!**

As a start . . . you need only ten people to qualify for the Special Group Travel discount (two children count as one adult).

And to go on with . . . there are reduced fares for day outings, single and return; for parties making journeys over a period; and for individuals (minimum) travelling to one particular point for a business meeting or conference.

Ask at your local station or travel agent for full details.

ESTABLISHED 1923

# **DOBELL SHEARMAN**

**& CO. LTD.**

## **£10 TYPEWRITERS from £10**

Also full selection new standard and portable typewriters  
OFFICE EQUIPMENT

29 High Street & 33 Faringdon Road, Swindon.

Tel. 4961/2

## ***Heating Services (C.G.H.) Ltd.***

HEATING, PLUMBING & VENTILATING  
ENGINEERS

INSTALLATION & REPAIRS

24 HOUR MAINTENANCE SERVICE

28 BUCKINGHAM RD.

Tel. SWINDON 27630

# LAST WEEKS MATCHES

## FOOTBALL LEAGUE (DIVISION III)

Saturday, 20th January, 1968.

Lost to NORTHAMPTON TOWN (Away) 2—0.

Team: Downsborough; Thomas, Trollope; Butler, Nurse, Harland; Heath, Dawson, Terry, Smart, Rogers. Sub: Penman.

Referee: Mr. J. G. D. Lewis (Port Talbot).

## FOOTBALL COMBINATION

Tuesday, 16th January, 1968.

Lost to WALSALL (Away) 5—1.

Team: Jones; Blick, Fry; Desmeules, Giles, Clark; Mascia, Hubbard, Dangerfield, Bailey, Walker.

Scorer: Bailey.

Saturday, 20th January, 1968.

Drew with GILLINGHAM (Home) 0—0.

Team: Jones; Blick, Fry; Desmeules, Giles, Clark; Lowes, Hubbard, Dangerfield, Bailey, Walker.

## HELLENIC LEAGUE

Saturday, 20th January, 1968.

Drew with ABINGDON (Home) 1—1.

Team: Parsons; Allen, King; Gubbins, Jeffrey, Tyler; Boorman, Wall, Wells, Smith J, Claypole.

Scorer: Smith J.



Check YOUR driving and YOUR car  
Make both as safe as you can for  
**NIGHT DRIVING**

Accidents at night are twice as likely  
to have serious or fatal results



F. J. ROPER

Devizes Rd.

Swindon

Phone 22341

F. J. ROPER

Cliftonian

38 William St.

Swindon

Phone 3785

*Swindon's*

*Finest*

# **FISH and CHIPS**

**CALL ON  
YOUR  
WAY  
HOME**

Menu

**PLAICE  
HAKE  
COD  
SKATE**

**WE SHALL BE  
WAITING  
TO  
SERVE YOU**

F. J. ROPER

High St.

Wootton Bassett

F. J. ROPER

Cross Hayes

Malmesbury

# DIVISION III

Date	Opponents	Ground	Result
August 19	Brighton & Hove Albion .....	15,790 ..... (H)	2—1
22	Newport County (League Cup) .....	10,870 ..... (H)	1—1
25	Stockport County .....	9,103 ..... (A)	0—2
29	Newport Co. (League Cup Replay) .....	6,537 ..... (A)	0—2
September 2	Tranmere Rovers .....	12,152 ..... (H)	3—1
4	Barrow .....	7,552 ..... (A)	1—1
9	Orient .....	4,722 ..... (A)	0—0
16	Northampton Town .....	13,280 ..... (H)	4—0
23	Walsall .....	9,132 ..... (A)	2—3
26	Barrow .....	13,567 ..... (H)	0—1
30	Gillingham .....	12,983 ..... (H)	2—2
October 4	Reading .....	17,867 ..... (A)	1—2
7	Bury .....	8,222 ..... (A)	1—1
14	Bournemouth & B.A. ....	11,135 ..... (H)	4—0
21	Colchester United .....	4,907 ..... (A)	1—2
24	Reading .....	17,229 ..... (H)	5—1
28	Peterborough United .....	12,215 ..... (H)	0—0
November 4	Mansfield Town .....	4,619 ..... (A)	2—2
11	Watford .....	13,327 ..... (H)	2—0
13	Tranmere Rovers .....	6,519 ..... (A)	2—3
18	Southport .....	5,008 ..... (A)	1—1
25	Scunthorpe United .....	11,944 ..... (H)	2—0
December 2	Oldham Athletic .....	6,965 ..... (A)	2—0
12	(1) Salisbury .....	12,193 ..... (H)	4—0
16	Brighton & Hove Albion .....	9,141 ..... (A)	0—0
19	Stockport County .....	12,856 ..... (H)	2—0
26	Torquay United .....	12,910 ..... (A)	1—1
30	Torquay United .....	18,161 ..... (H)	1—0
January 6	(2) Luton Town .....	18,203 ..... (H)	3—2
20	Northampton Town .....	..... (A)	0—2
27	(3) Blackburn Rovers .....	..... (H)	.....
February 3	Walsall .....	..... (H)	.....
10	Gillingham .....	..... (A)	.....
17	(4) Grimsby Town .....	..... (H)	.....
24	Bury .....	..... (H)	.....
March 2	Bournemouth & B.A. ....	..... (A)	.....
9	(5) Shrewsbury Town .....	..... (A)	.....
16	Colchester United .....	..... (H)	.....
23	Peterborough United .....	..... (A)	.....
30	(6) Mansfield Town .....	..... (H)	.....
April 6	Watford .....	..... (A)	.....
12	Oxford United .....	..... (A)	.....
13	Southport .....	..... (H)	.....
16	Oxford United .....	..... (H)	.....
19	Scunthorpe United .....	..... (A)	.....
23	Bristol Rovers .....	..... (H)	.....
27	(S.F.) Oldham Athletic .....	..... (H)	.....
May 4	Bristol Rovers .....	..... (A)	.....
11	Grimsby Town .....	..... (A)	.....
18	(Final)	.....	.....

**I say!**

**Do you know?**



**It's our 150th ANNIVERSARY this year  
WE HAVE BEEN PROVIDING  
MAXIMUM SECURITY FOR SAVINGS  
FOR 150 YEARS**

**INTEREST 5½% IN THE  
SPECIAL INVESTMENT DEPT.**

Local Offices  
17 Commercial Road, Swindon.  
6 Maryport Street, Devizes.

**T RUSTEE  
S AVINGS  
B ANK**

8,000 SEATS FOR SHEFFIELD WEDNESDAY F.C.

7,000 SEATS FOR ASTON VILLA F.C.

6,000 SEATS FOR SHEFFIELD UNITED F.C.

3,500 SEATS FOR LEEDS UNITED F.C.

3,000 SEATS FOR OLDHAM F.C.

4,000 SEATS FOR PETERBOROUGH AGRICULTURAL SOCIETY

13,500 SEATS FOR HULL CITY F.C.

3,200 SEATS FOR COVENTRY CITY F.C.

**FAST, EFFICIENT SERVICE FROM MARTYN LYNSHAW LTD.**

## THE LATEST THING IN STADIUM SEATING

- MANUFACTURED IN HIGH-DENSITY POLYTHENE
- NO MAINTENANCE
- ANY COLOUR
- SEND FOR DETAILS
- LIGHT CONSTRUCTIONAL STEELWORK
- ANCILLARY WORK FOR THE BUILDING TRADE



*FAST EFFICIENT SERVICE BY*

**MARTYN LYNSHAW LIMITED**

Telephone  
21844

**BOUNDARY WORKS - STRATTON ROAD - SWINDON**